

DAM GALLERY

GANland

with Mario Klingemann, Casey Reas, Anna Ridler, Jenna Sutela

01. February – 21. March 2020

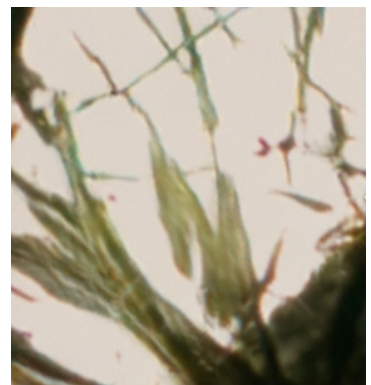
We are happy to present to you for the first time in Berlin a selection of artists representing the avantgarde of digital art. Those artists work with “Machine Learning” or “GAN Generative Adversarial Networks”. Both are complex and time-consuming algorithmic systems that are being used to create new, previously unimaginable images.



To quote Anna Ridler regarding GAN: It is a process of essentially two intelligences dancing around each other, and then unpredictable and unquantifiable results of the dynamics emerge from this, to make images.

For his work “Memories of Passersby I”, Mario Klingemann trained in this case his AI model using thousands of portraits from the 17th to the 19th century to create new portraits in realtime that will never appear again.

Casey Reas presents a further development of the series exhibited at DAM last year, that was based on pictures of nature, named “Latent Slice”.



Anna Ridler's most famous work “Mosaic Virus” refers to the tulip mania during the 1630's in the Netherlands and developed a unique, contemporary solution for modifications of varieties of tulips.

Jenna Sutela's multilayered audio-visual presentation “nimiia cētī” uses Machine Learning to generate a new written and spoken language. This language is based on the computer's interpretation of a Martian tongue from the late 1800s, originally channelled by medium Hélène Smith, while simultaneously engaging with the movements of a bacterium called *Bacillus subtilis*, which is believed to survive on Mars.



The artists have exhibited previously at the world's most significant institutions such as MoMA, New York, Whitney, New York, Serpentine Gallery, London, Pompidou, Paris or Hermitage, St. Petersburg.